



The ultimate TMS System for safety and performance

Tire Pressure Monitoring System

FEATURES

EFI Technology Inc. has developed and race-proven a Tire Pressure Monitoring System that precisely monitors tire pressures on all 4 wheels continuously.

TMS Transmitter

The TMS Transmitter is mounted outside the wheel on a TMS-ready rim. An o-ring retained in the transmitter housing ensures a tight seal when the retaining nut is torqued to the correct setting. TMS Transmitters can be mounted to any corner of the car and the receiver programmed to recognize their respective tire assignment.

TMS Receiver

The TMS Receiver detects the signals from each transmitter as the wheels start rotating. The TMS Receiver is programmed with the serial numbers of each transmitter so that it knows which sensor is on which tire and prevents detecting readings from other teams units. The pressure readings are sent to the data logger unit via a serial data stream or by 0-5V analog signals.

TMS ADVANTAGES

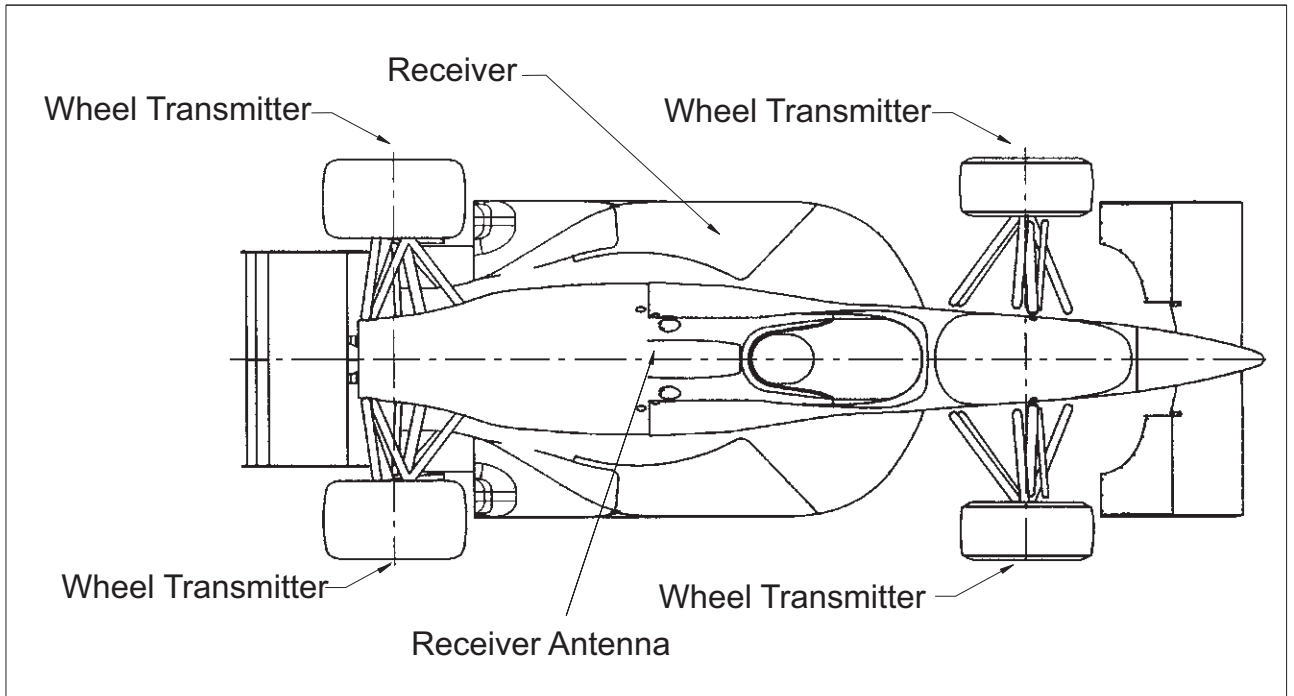
- High resolution (0.3psi)
- Fast update rate (every 0.8secs)
- Low purchase & maintenance costs
- Small and light weight sensors
- Bolts directly to TMS-ready wheels
- Interfaces to any existing data system

TMS BENEFITS

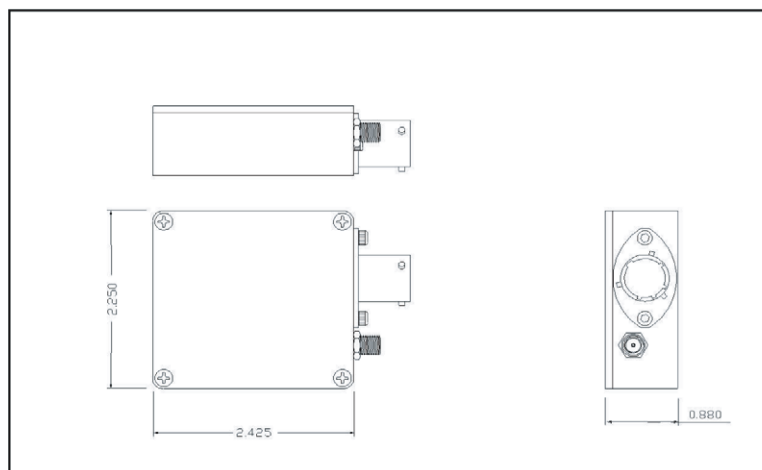
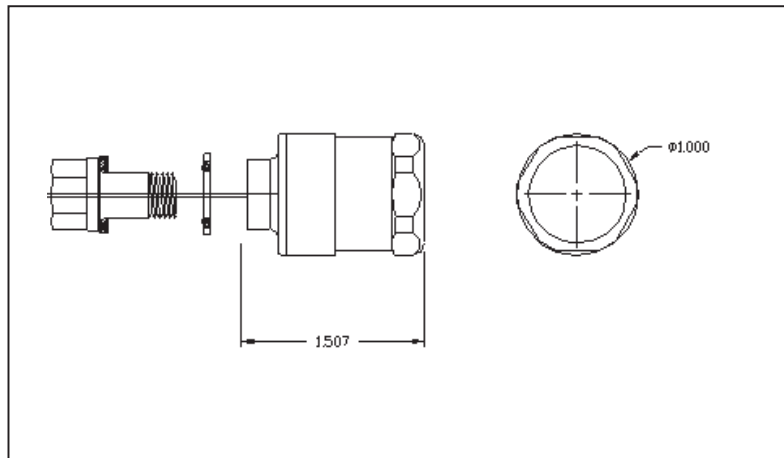
- Provides critical tire data to warn driver and pit crew of deflation
- Invaluable information to optimize car setup
- Essential race data for pit stop strategy
- Realtime temperature data

60-911	Wheel Transmitter
60-910	TMS Receiver
80-306	Car antenna
80-404	Car antenna cable
22-027	Bulkhead adapter

TMS System Installation



Tire Pressure Monitoring System



Specifications subject to change without prior notice