



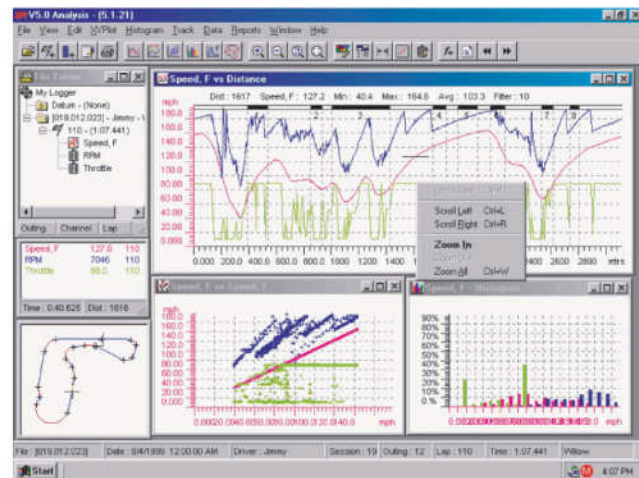
THE DATA LOGGER CUSTOM DESIGNED FOR TOP LEVEL PROFESSIONAL RACE TEAMS

*Power, flexibility and expandability
to handle the most sophisticated
data logging applications*

LEVEL 3 & 4 DATA LOGGER UNIT

STANDARD FEATURES

- Configurable internal amplifiers
 - for strain gauges and thermocouples
- Direct data link to Steering wheel or LCD dash
 - maximum flexibility in driver instrumentation
- Onboard math capabilities
 - for real time data processing
- Massive memory capacity
 - up to 128MB
- High speed logging rates
 - up to 1000 samples per second
- High resolution
 - 12 bit ADC for increased accuracy
- Full speed USB download
 - 4MB in under 10 seconds
- Powerful Windows based software
 - user-friendly, flexible, expandable
- Compact lightweight package
 - weight under 2 lbs
- AutoSport connectors
 - ensures reliability and durability
- Data link to 3rd party ECU for engine data
 - saves duplication of sensors





LEVEL 3 & 4 DATA LOGGER *Technical Specifications*

SOFTWARE

- Time plots
- Distance Plots
- Track mapping
- Histograms
- X-Y plots
- Frequency plots
- Graphical reports
- Split reports
- Lap reports
- Math package
- Conversion utility for historical data

SPECIFICATIONS

- Analog inputs: 20(L3), 32(L4) STD, 64 Max
- Digital inputs: 6(L3), 8(L4)
- Internal channels: 3
 - Lateral acceleration
 - Battery voltage
 - Box temperature
- Beacon inputs: End of lap, Split times
- Logging memory: 8MB(L3), 16MB(L4) STD, 128MB Max
- Logging rates: 1Hz to 1000Hz
- Resolution: 12 bit ADC
- Logging modes: Sequential & Cyclic
- Dash support: Current loop
- ECU data link: Current loop, RS232/485, CAN
- Junction boxes: Up to 4 (8 channels ea.)
- Telemetry output: Real-time, End of lap
- Download speed: Full speed USB, 12Mbit/second

SENSORS

All 0-5v output sensors are fully compatible with this system including tire pressure, laser ride height and torque. A full range of sensors to measure engine and chassis parameters are available. Ask for more details.

JUNCTION BOXES

Level 3 & 4 data loggers have inputs for up to 4 external 8 channel junction boxes. The junction boxes are configurable with 0-5v or amplified inputs. There are many options available for combinations of strain gauge, thermocouple and normal sensor inputs.

Strain gauge inputs are configurable for gains of: 100, 200, 500 and 1000 with offsets of 0.5v or 2.5v. Custom gains/offsets are available on request.

Thermocouple inputs can be set for 600 degC or 1200 degC.

OPERATIONAL

Enclosure:	Billet 6061 Aluminum
Construction:	CMOS surface mount design
Environmental:	EMI O ring sealed
Connector:	AutoSport
Dimensions:	6.20" x 5.60" x 1.80"
Weight:	1.95 lbs
Power Supply:	8 to 20 volts transient protected
Power Consumption:	8 watts @ 14 volts
Operating Temp:	-40 to +85 deg C continuous
EMI Protection:	Exceeds 100 V/m >1GHz

Specifications subject to change without prior notice